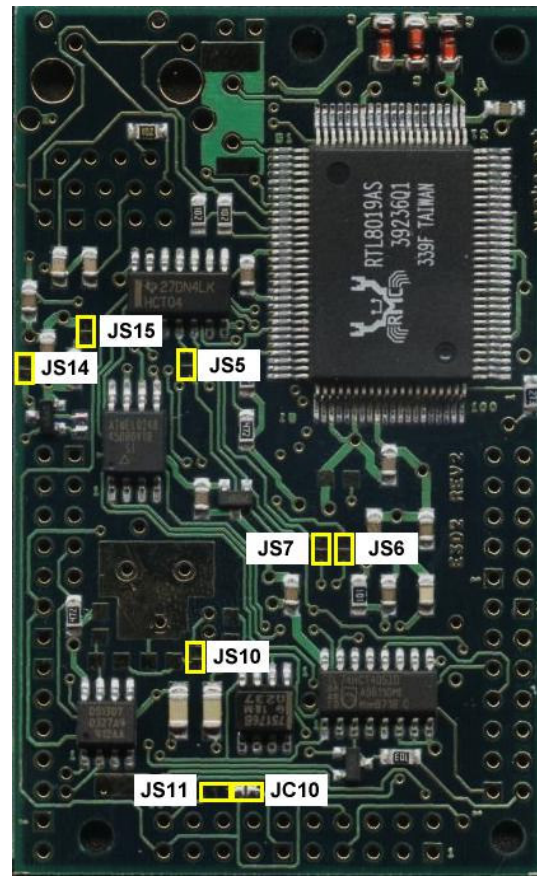
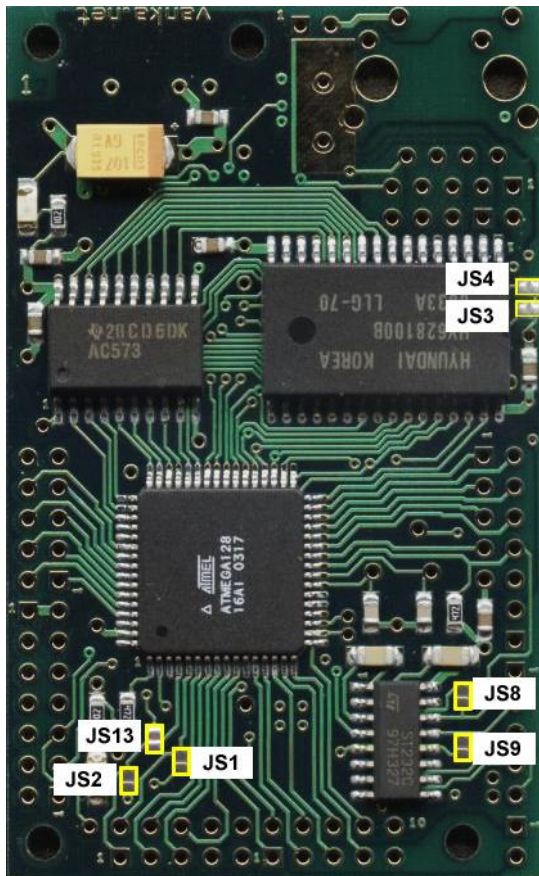


LITTLE E3D2 CONFIGURATION JUMPERS



TOP SIDE	DESCRIPTION
JS1	Connects PE3 and pin 9 of ST232 (this turns on CTS)
JS2	Connects PE2 and pin 10 of ST232 (this turns on RTS)
JS3*	Connects A15 of 128kB RAM chip to GND
JS4*	Connects A16 of 128kB RAM chip to GND
JS8	Connects RS232 RX directly to RX. Can be conected ONLY WHEN ST232 is not present on the board.
JS9	Connects RS232 TX directly to TX. Can be conected ONLY WHEN ST232 is not present on the board.
JS13	Connects SN75167 RS485 driver's DIR to PE2
BOTTOM SIDE	DESCRIPTION
JS5	Connects inverted Realtek's interrupt line to PE5
JS6	Connects A15 of 128kB RAM chip to PE6. Use either JS6 or JS3
JS7	Connects A16 of 128kB RAM chip to PE7. Use either JS7 or JS4
JS10	Allows driving the ATmega128's 32768 Hz clock line by DS1307. Not used.
JC10*	Connects inverter which drives 512kB DataFlash's chip select line to PB0
JS11	Disables DataFlash permanently by connecting inverter which drives the DataFlash's CS line to the GND. Use either JC10 or JS11.
JS14	Connects 128kB RAM VCC line (pin 32) directly to VCC
JS15	Connects VBAT to 128kB RAM power circuitry. This enables RAM battery backup

* Default configuration

The default configuration sets the Little E3D2 board to:
 32kB RAM, no battery backed (JS3 and JS4 short, JS6 and JS7 open)
 RS485 driver transmits only (JS13 open)
 512kB Flash in use (JC10 short)